

Simply Labs SL-8800 Protocol Analyzer

The SL-8800 protocol analyzer is designed to validate source, sink and repeater devices for compliance with the latest High-bandwidth Digital Content Protection (HDCP) 2.2 specification, which supports content owners' requirements to ensure the secure delivery of premium content such as Ultra HD. HDCP is a specification developed by Intel Corporation to protect digital entertainment content across digital video interfaces. The protocol analyzer supports Version 2.0 of the HDMI® specification. Optional upgrades are available for MHL® 3.0 and MHL® 2.0 specifications by purchasing the optional hardware and software interface license. An HDCP 1.4 option is available and DCP approved.



Front



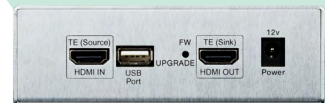
Back

SL-8800 Key Features

- Supports HDCP 2.2 sink, source, and repeater devices for HDMI
- Supports HDCP 2.2 sink, source, and dongle devices for MHL 3
- DCP approved
- Options for HDCP 1.4 and MHL 2 now available
- Supports interface between HDMI, MHL 3 and MHL 2
- Monitors the DDC activities and HDCP 2.2 messages
- Automatically checks authentication between SL-8800 and device under test
- Windows PC GUI application with USB connection
- Advanced debug mode helps developers quickly identify root cause
- View detailed log info by double clicking failed test ID within the summary report
- Displays the final output image from the stream cipher for user examination
- High performance FPGA design allows upgrades to support other specifications
- CE certification document available upon request



SL-8800-M3X Front

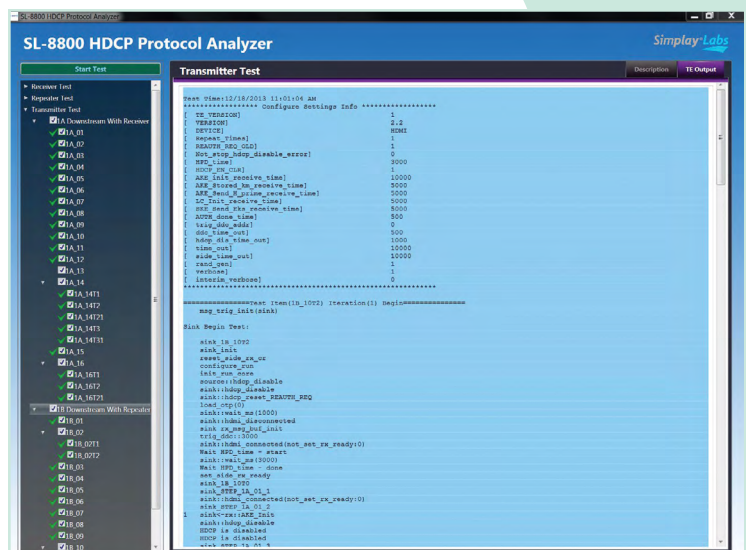


SL-8800-M3X Back

Advanced Debug Mode

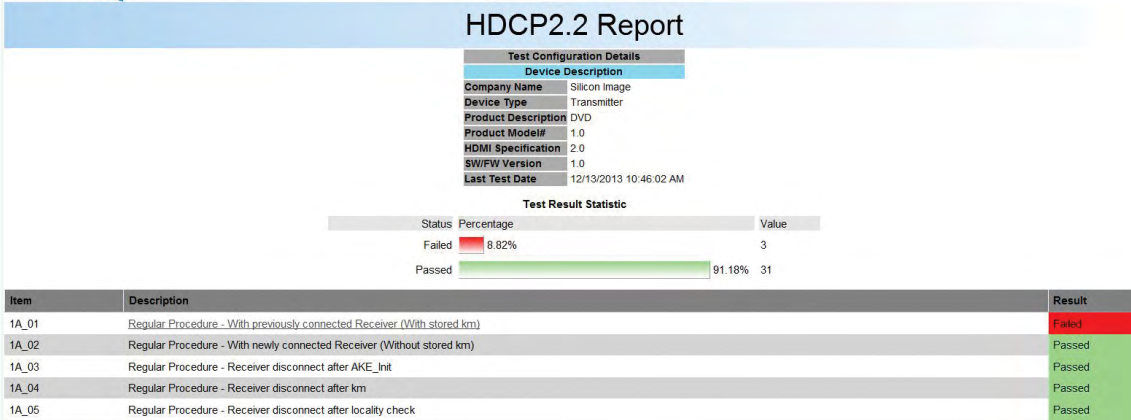
- Change numerous timing parameters within each test ID
- View DDC read and write activity between HDCP Tx/Rx
- View and print dumps of each DDC message
- Parse every message according to HDCP 2.2 specification
- Record polling data changes of Rx status register
- Log time stamp of each event to help identify system timing problems

Main Window of HDCP 2.X Analyzer

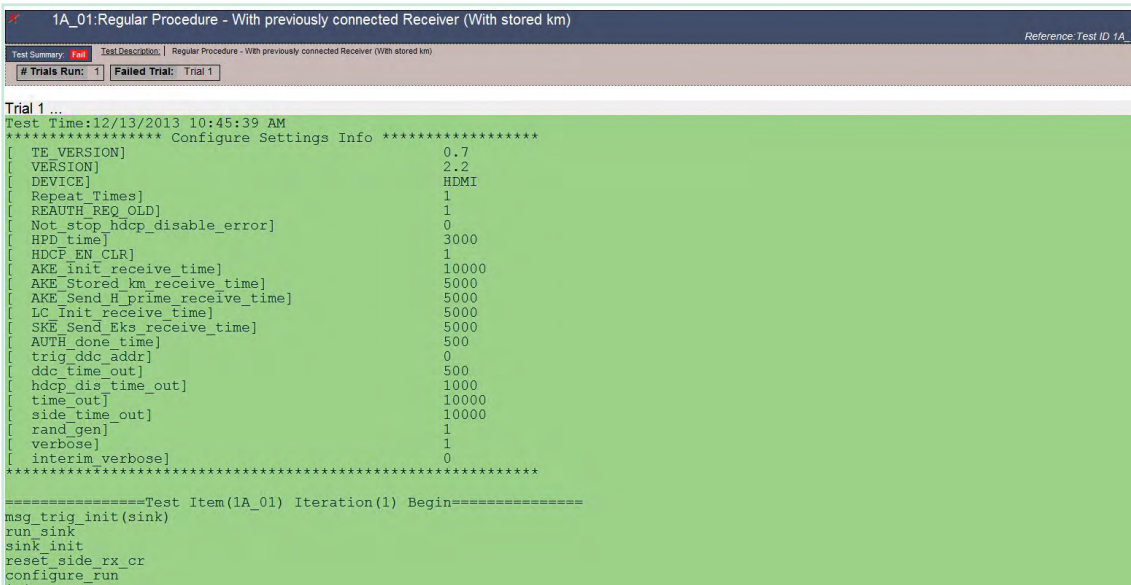


Simplay SL-8800

Test Results Report Window



Test Details Window



Specifications:

Size (cm): 40.6 × 24.13 × 8.89
Size (in): 16.0 × 9.5 × 3.5
Weight: 3.17 kg; 7.0 lb
Power: 100 V – 240 V

Optional Features:

- SL-8800-M3X MHL 3 Adapter (also requires SL-8800-M3X-SW)
- SL-8800-M3X-SW software license for MHL 3 adapter (also supports M2X)
- SL-8800-M3XBDL includes the base unit, MHL 3 adapter and software
- SL-8800-H1X-SW software to enable HDCP 1.4 compliance testing
- SL-8800-M2X MHL 2 Adapter (also requires SL-8800-H1X-SW)

For sales support, please contact Vprime at sales@vprime.com or 503.619.2439

Copyright ©2015 Simplay Labs, LLC. All rights reserved.

Simplay®, Simplay HD®, Simply HD logo, Simplay Labs™ and SimplayLabs logo are trademarks or registered trademarks of Silicon Image, Inc. in the United States and/or other countries. HDMI® and the HDMI logo are trademarks or registered trademarks of, and are used under license from, HDMI Licensing, LLC in the United States or other countries. MHL® and the MHL logo are trademarks or registered trademarks of, and are used under license from, MHL, LLC in the United States or other countries. All other trademarks and registered trademarks are the property of their respective owners in the United States and/or other countries.

HDMI Licensing, LLC; MHL, LLC, and Simplay Labs, LLC are wholly owned subsidiaries of Silicon Image, Inc.

The absence of a trademark symbol does not constitute a waiver of the trademark owner's rights or other intellectual property rights with regard to a product name, logo or slogan.



Simplay Labs, LLC
www.simplaylabs.com
 1140 E Arques Ave, Sunnyvale, CA 94085 USA
 Email: admin@simplaylabs.com

SimplayLabs-PB-1000 Rev. 3